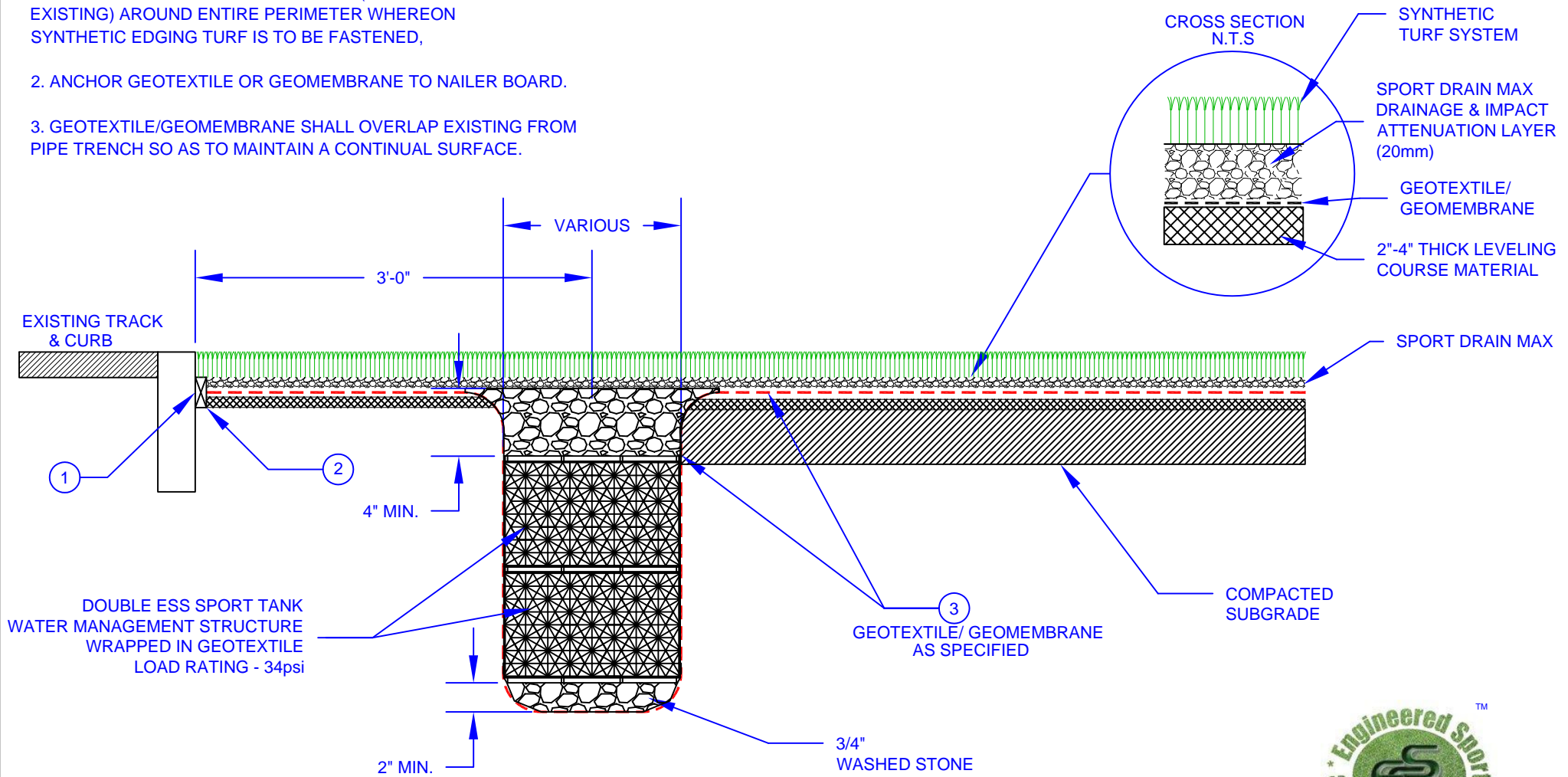


# NOTES INDICATED BY NUMBER

1. NAILER BOARD 2 X 4 PRESSURE TREATED LUMBER ANCHORED TO ALL CONCRETE EDGES (NEW AND EXISTING) AROUND ENTIRE PERIMETER WHEREON SYNTHETIC EDGING TURF IS TO BE FASTENED,

2. ANCHOR GEOTEXTILE OR GEOMEMBRANE TO NAILER BOARD.

3. GEOTEXTILE/GEOMEMBRANE SHALL OVERLAP EXISTING FROM PIPE TRENCH SO AS TO MAINTAIN A CONTINUAL SURFACE.



TYPICAL FIELD SECTION  
N.T.S.



TITLE  
**SPORT TANK TYPICAL  
FIELD DETAIL**

DRAWN	CHK'D	APP'D	RELEASE
GRS			—
DATE	DATE	DATE	
3/15/09			
			SIZE A
			SHEET 1 OF 1

All trademarks, service marks and logos displayed are registered or unregistered trademarks of Engineered Sportfield Solutions LLC. These trademarks may not be used without written consent. Any unauthorized use of any trademarks, service marks, or logos may be a violation trademark laws.